

ADLER SpA



Ball Valve Wafer Type



FA1 BALL VALVE WAFER TYPE

Ball valve “wafer type”, full bore, manufactured from round bar, according to EN 12516.2; ASME B16.34; ISO 14313; EN 1092-1; EN 1759-1; ASME B16.5; ANSI B1.1.; ISO14313; EN 558 (basic series 100)

Available size from DN 10 to DN 50 in carbon steel, stainless steel and special steel

Rating PN 6 / PN 10 ÷ 40 / ANSI 150 ÷ 300.

Double seals on body/insert junction

Chevron ring on stem

On request :

- with o’ring on stem (patent n°00219688).
- fire-safe execution according to ISO 10497 API 607
- fire safe execution according to BS6755 API 607/6FA (patent n° 00219617)
- cryogenic execution ISO 28921
- according to PED 14/68/UE directive
- according to TPED 2010/35/UE directive
- according to ATEX 14/34/UE directive
- degreased according to ISO 23208 oxygen service
- **certified** in safety system S.I.L. 3
- **certified** for fugitive emission in class “A” ISO 15848



FA2 BALL VALVE WAFER TYPE

Ball valve “wafer type” full bore, manufactured from round bar, according to EN 12516.2; ASME B16.34; ISO 14313; EN 1092-1; EN1759-1; ASME B16.5 ANSI B1.1.; ISO 14313; EN 558 (Basic series 100)

Available size from DN 10 to DN 250 in carbon steel, stainless steel and special steel

Rating PN 6 / PN 10 ÷ 40 / ANSI 150 ÷ 300.

Double seals on body/end junction (patent n°00216919)

Chevron ring on stem.

On request :

- with o’ring on stem (patent n°00219688).
- fire-safe execution according to ISO 10497 API 607
- fire safe execution BS6755 API 607/6FA (patent n° 00219617)
- cryogenic execution ISO 28921
- according to PED 14/68/UE directive
- according to TPED 2010/35/UE directive
- according to ATEX14/34/UE directive
- degrease according to ISO 23208 oxide service
- **certified** in safety system S.I.L. 3.
- **certified** for fugitive emission in class “A” ISO 15848.

Ball Valve Wafer Type



BALL VALVES WAFER TYPE FB2

Ball valve "wafer type" full bore, manufactured from casting, according to EN 12516.2; ASME B16.34; ISO 14313; EN 1092-1; EN1759-1; ASME B16.5 ANSI B1.1.: ISO 14313; EN 558 (basic series EN 100)

Available size from DN 150 to DN 200 in stainless steel.

Rating PN 10 ÷ 40 / ANSI 150 ÷ 300.

Double seals on body/end junction (patent n°00216919)

Chevron ring on stem.

On request :

- with o'ring on stem (patent n°00219688).
- fire-safe execution according to ISO 10497 API 607
- fire safe execution BS6755 API 607/6FA (patent n° 00219617)
- according to PED 14/68/UE directive
- according to TPED 2010/35/UE directive
- according to ATEX14/34/UE directive
- degrease according to ISO 23208 oxige service
- **certified** in safety system S.I.L. 3.
- **certified** for fugitive emission in class "A" ISO 15848. Available with o'ring on stem (patent n°00219688).



FB1 BALL VALVE WAFER TYPE

Ball valve "wafer type", full bore, manufactured from casting, construction in according to EN 12516.2; ASME B16.34; ISO 14313; EN 1092-1; EN 1759-1; ASME B16.5; ANSI B1.1.; ISO 14313; EN 558 (basic series 100)

Available size from DN 40 to DN 150 in stainless steel.

Rating PN 10 ÷ 40 / ANSI 150.

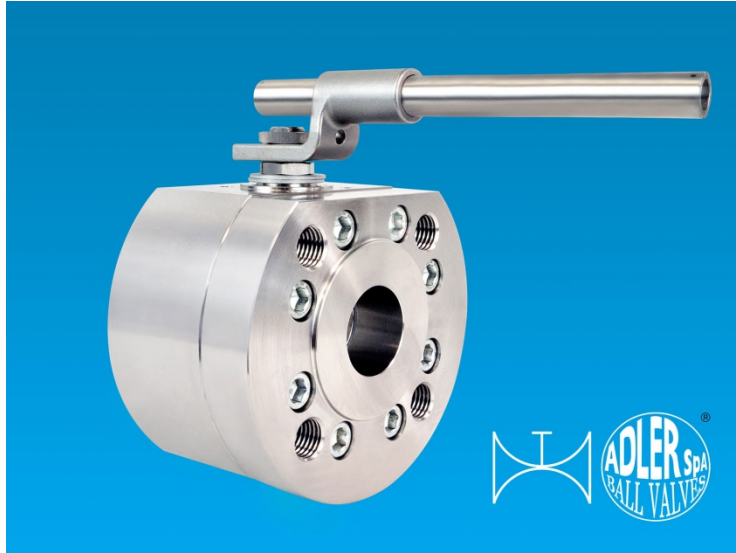
Double seals on body / insert junction

Chevron ring on stem

On request :

- with o'ring on stem (patent n°00219688).
- fire-safe execution according to ISO 10497 API 607
- fire safe execution BS6755 API 607/6FA (patent n° 00219617)
- according to PED 14/68/UE directive
- according to TPED 2010/35/UE directive
- according to ATEX14/34/UE directive
- degrease according to ISO 23208 oxige service
- **certified** in safety system S.I.L. 3.
- **certified** for fugitive emission in class "A" ISO 15848.

Ball Valve Wafer Type



BALL VALVE WAFER TYPE FC2

Ball valve "wafer type" full bore, manufactured from round bar, according to EN 12516.2; ASME B16.34; ISO 14313; EN 1092-1; EN1759-1; ASME B16.5 ANSI B1.1; ISO 14313.

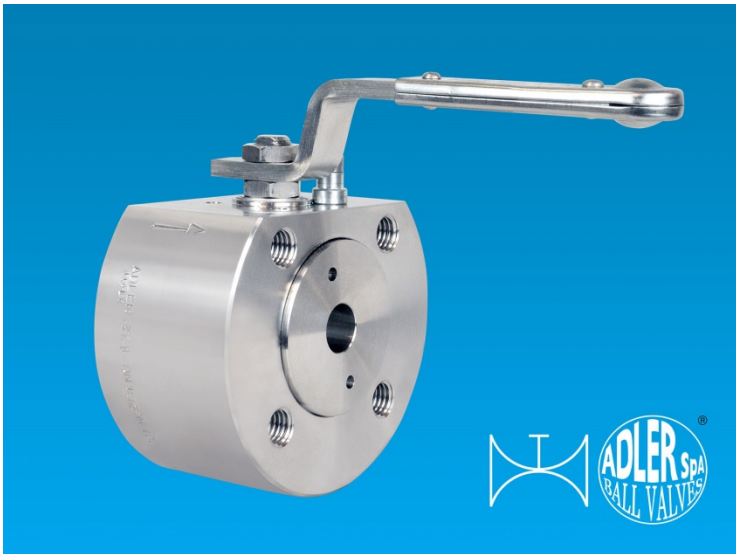
Available size from DN 50 to DN 200 in carbon steel stainless steel and special steel
Rating PN 63 – 100 – 160 / ANSI 600 / ANSI 900 / ANSI 1500

Double seals on body/end junction (patent n°00216919)

Chevron ring on stem.

On request :

- with o'ring on stem (patent n°00219688).
- fire-safe execution according to ISO 10497 API 607
- fire safe execution BS6755 API 607/6FA (patent n° 00219617)
- cryogenic execution ISO 28921
- according to PED 14/68/UE directive
- according to TPED 2010/35/UE directive
- according to ATEX14/34/UE directive
- degrease according to ISO 23208 oxige service
- **certified** in safety system S.I.L. 3.
- **certified** for fugitive emission in class "A" ISO 15848.



BALL VALVE WAFER TYPE FC1

Ball valve "wafer type", full bore, manufactured from round bar, construction in according to EN 12516.2; ASME B16.34; ISO 14313; EN 1092-1; EN 1759-1; ASME B16.5; ANSI B1.1; ISO 14313.

Available size from DN 10 to DN 40 in carbon steel, in stainless steel and special steel
Rating PN 63 – 100 – 160 / ANSI 600 / ANSI 900 / ANSI 1500.

Double seals on body/insert junction

Chevron ring on stem.

On request :

- with o'ring on stem (patent n°00219688).
- fire-safe execution according to ISO 10497 API 607
- fire safe execution BS6755 API 607/6FA (patent n° 00219617)
- cryogenic execution ISO 28921
- according to PED 14/68/UE directive
- according to TPED 2010/35/UE directive
- according to ATEX14/34/UE directive
- degrease according to ISO 23208 oxige service
- **certified** in safety system S.I.L. 3.
- **certified** for fugitive emission in class "A" ISO 15848.

Split Body Ball Valve



SPLIT BODY BALL VALVE FE2 – ANSI 150

Ball valve 2 piece SPLIT BODY type full bore ISO 14313, manufactured from round bar or casting, construction according to EN 12516.2; ASME B16.34; EN 1759-1 ; ASME B16.5; ISO 14313; ANSI B16.10; EN 558 (Basic series 3).

Available size from DN 15 to DN 200 in carbon steel, stainless steel and special steel
Rating ANSI 150 (on request PN 16).

Double seals on body/end junction (patent n°00216919)

Chevron ring on stem.

On request:

- with o’ring on stem (patent n°00219688).
- fire-safe execution according to ISO 10497 API 607
- fire-safe execution according to BS6755 API 607/6FA (patent n° 00219617).
- cryogenic execution ISO 28921
- according to PED 14/68/UE directive
- according to TPED 2010/35/UE directive
- according to ATEX 14/34/UE directive
- degreased according to ISO 23208 for oxygen service
- **certified** in safety system S.I.L. 3.
- **certified** for fugitive emission in class “A” ISO 15848.



SPLIT BODY BALL VALVES FF2 – ANSI 150

Ball valve 2 piece SPLIT BODY type full bore, manufactured from round bar or casted, construction according to EN 12516.2; ASME B16.34; EN 1759-1; ASME B16.5; ISO 14313; ANSI B16.10; ISO 14313, EN 558 (Basic series 12).

Available size from DN 50 to DN 300 in carbon steel, stainless steel and special steel.

Rating ANSI 150

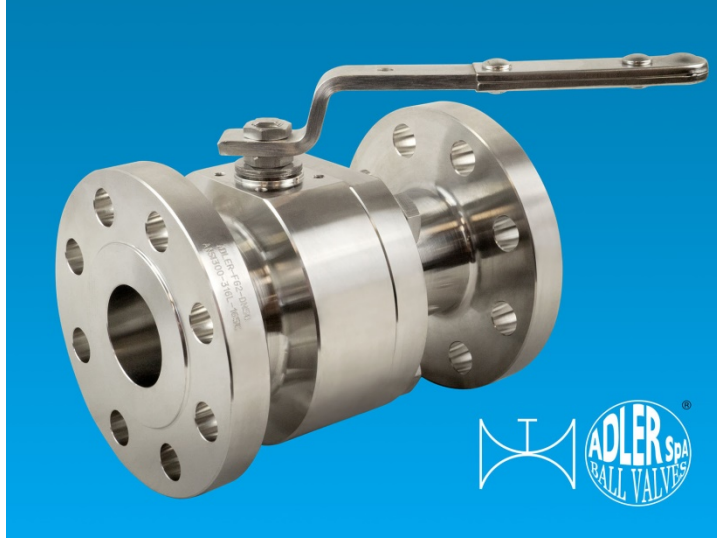
Double seals on body/end junction (patent n°00216919)

Chevron ring on stem.

On request:

- with o’ring on stem (patent n°00219688).
- fire-safe execution according to ISO 10497 API 607
- fire-safe execution according to BS6755 API 607/6FA (patent n° 00219617).
- cryogenic execution ISO 28921
- according to PED 14/68/UE directive
- according to TPED 2010/35/UE directive
- according to ATEX 14/34/UE directive
- degreased according to ISO 23208 for oxygen service
- **certified** in safety system S.I.L. 3.
- **certified** for fugitive emission in class “A” ISO 15848.

Split Body Ball Valve



SPLIT BODY BALL VALVE FG2 – ANSI 300

Ball valve 2 piece SPLIT BODY type full bore, manufactured from round bar or casting, construction according to EN 12516.2; ASME B16.34; EN 1759-1 ; ASME B16.5; ISO 14313; ANSI B16.1; EN 558 (Basic series 4).

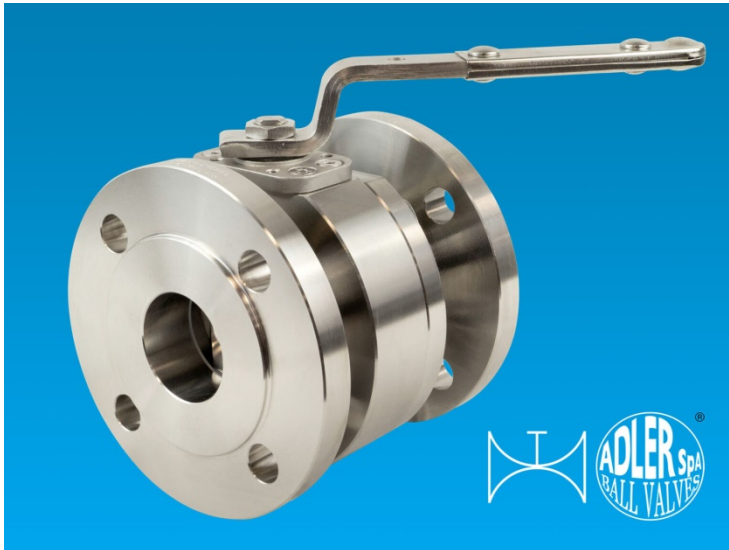
Available size from DN 15 to DN 250 in carbon steel, stainless steel and special steel Rating ANSI 300.

Double seals on body/end junction (patent n°00216919)

Chevron ring on stem.

On request:

- with o’ring on stem (patent n°00219688).
- fire-safe execution according to ISO 10497 API 607
- fire-safe execution according to BS6755 API 607/6FA (patent n° 00219617).
- cryogenic execution ISO 28921
- according to PED 14/68/UE directive
- according to TPED 2010/35/UE directive
- according to ATEX 14/34/UE directive
- degreased according to ISO 23208 for oxygen service
- **certified** in safety system S.I.L. 3.
- **certified** for fugitive emission in class “A” ISO 15848.



SPLIT BODY BALL VALVE FM2 -PN 10/40-

Ball valve 2 piece SPLIT BODY type full bore, manufactured from round bar or casted, construction in according to EN 12516.2; ASME B16.34; EN 1759-1 ; ASME B16.5; ISO 14313; ISO 14313, EN 558 (Basic series 27).

Available size from DN 15 to DN 300 in carbon steel and stainless steel.

Rating PN 10 ÷ 40.

Double seals on body/end junction (patent n°00216919)

Chevron ring on stem.

On request:

- with o’ring on stem (patent n°00219688).
- fire-safe execution according to ISO 10497 API 607
- fire-safe execution according to BS6755 API 607/6FA (patent n° 00219617).
- cryogenic execution ISO 28921
- according to PED 14/68/UE directive
- according to TPED 2010/35/UE directive
- according to ATEX 14/34/UE directive
- degreased according to ISO 23208 for oxygen service
- **certified** in safety system S.I.L. 3.
- **certified** for fugitive emission in class “A” ISO 15848.

Split Body Ball Valve



SPLIT BODY BALL VALVES FN2 – PN 10/160

Ball valve 2 piece SPLIT BODY type full bore, manufactured from round bar or casted, construction in according to EN 12516.2; ASME B16.34; EN 1759-1 ; ASME B16.5; ISO 14313; ISO 14313; EN 558 (Basic series 1).

Available size from DN 15 to DN 300 in carbon steel, stainless steel and special steel

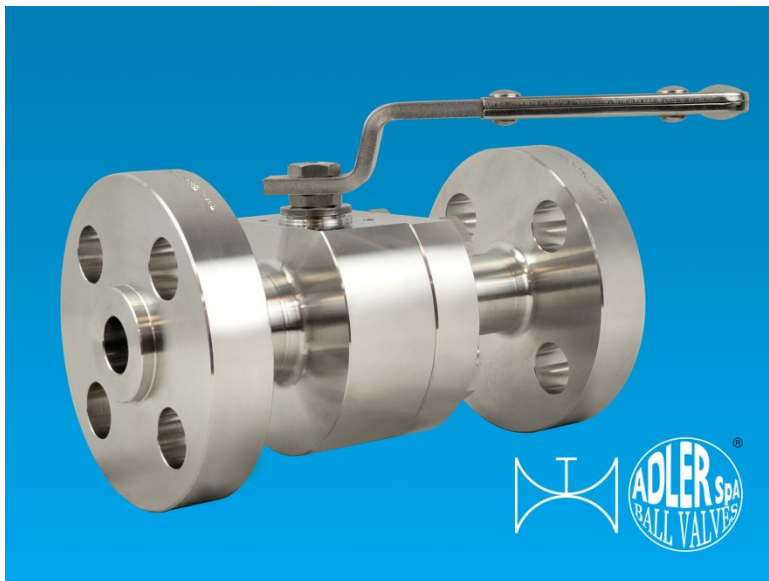
Rating PN 10 ÷ 100

Double seals on body/end junction (patent n°00216919)

Chevron ring on stem.

On request:

- with o’ring on stem (patent n°00219688).
- fire-safe execution according to ISO 10497 API 607
- fire-safe execution according to BS6755 API 607/6FA (patent n° 00219617).
- cryogenic execution ISO 28921
- according to PED 14/68/UE directive
- according to TPED 2010/35/UE directive
- according to ATEX 14/34/UE directive
- degreased according to ISO 23208 for oxigen service
- **certified** in safety system S.I.L. 3.
- **certified** for fugitive emission in class “A” ISO 15848.



SPLIT BODY BALL VALVES FH2 – ANSI 600

Ball valve 2 piece SPLIT BODY type full bore, manufactured from round bar or casting, construction according to EN 12516.2; ASME B16.34; EN 1759-1 ; ASME B16.5; ISO 14313; ANSI B16.1; ISO 14313, EN 558 (Basic series 5).

Available size from DN 15 to DN 150 in carbon steel, stainless steel and special steel

Rating ANSI 600.

Double seals on body/end junction (patent n°00216919)

Chevron ring on stem.

On request:

- with o’ring on stem (patent n°00219688).
- fire-safe execution according to ISO 10497 API 607
- fire-safe execution according to BS6755 API 607/6FA (patent n° 00219617).
- cryogenic execution ISO 28921
- according to PED 14/68/UE directive
- according to TPED 2010/35/UE directive
- according to ATEX 14/34/UE directive
- degreased according to ISO 23208 for oxigen service
- **certified** in safety system S.I.L. 3.
- **certified** for fugitive emission in class “A” ISO 15848.

Threaded Ball Valve



THREADED BALL VALVE FP2

Threaded ball valve 2 piece, full bore, manufactured from casted, construction in according to EN 12516-2; ISO 14313; ANSI B1.1; DIN 3202 M3.

Available size from ¼" to 2" in stainless steel.

Rating PN 40 ÷ 100.

Thread available ISO 7RP (GAS); ASME B1.20.1 (NPT).

Chevron ring on stem.

On request:

- with o'ring on stem (patent n°00219688).
- fire-safe execution according to ISO 10497 API 607
- fire-safe execution according to BS6755 API 607/6FA (patent n° 00219617).
- according to PED 14/68/UE directive
- according to ATEX 14/34/UE directive
- degreased according to ISO23208 for oxigen service
- **certified** in safety system S.I.L. 3.
- **certified** for fugitive emission in class "A" ISO 15848.



THREADED BALL VALVE

Threaded ball valve 2 piece full bore, manufactured from round steel bar, construction in according to EN 12516-2; ISO 14313; ANSI B1.1; DIN 3202 M3; ASME B16.34.

Available size from DN ¼" to DN 3" in carbon steel white galvanized, stainless steel and special steel

Galvanized treatment standard on carbon steel mateterial

Rating PN 40 ÷ 210 / Class 800 ÷ 3000.

Double seals on body/end junction

Thread available ISO 7RP (GAS); ASME B1.20.1 (NPT).

Chevron ring on stem.

On request:

- with o'ring on stem (patent n°00219688).
- fire-safe execution according to ISO 10497 API 607
- fire-safe execution according to BS6755 API 607/6FA (patent n° 00219617).
- according to PED 14/68/UE directive
- according to ATEX 14/34/UE directive
- degreased according to ISO 23208 for oxigen service
- **certified** in safety system S.I.L. 3.
- **certified** for fugitive emission in class "A" ISO 15848.

3 Pieces Ball Valve



3 PIECES BALL VALVE FP3

Threaded or welding ball valve 3 piece full bore, manufactured from round bar or casted, construction in according to EN 12516-2; ISO 14313; ANSI B1.1; DIN 3202 M3. ISO 14313

Available size from ¼" to 4" in stainless steel, carbon steel and special steel
Rating PN 20 ÷ 100.

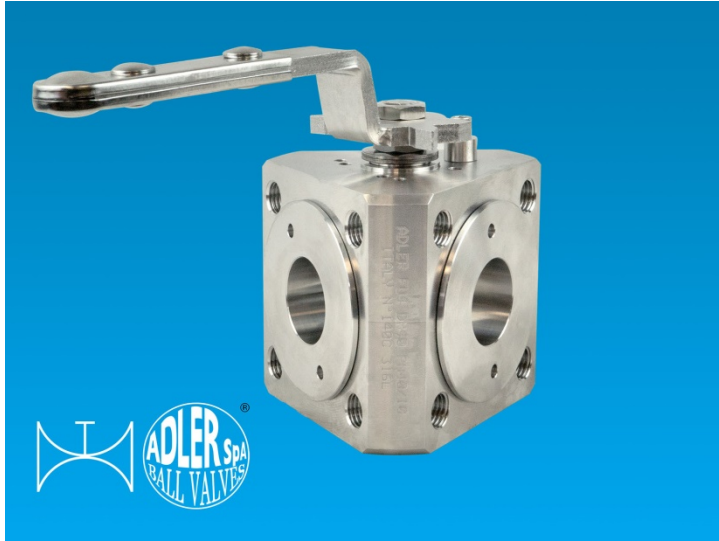
Thread available ISO 7RP (GAS); ASME B1.20.1 (NPT); ASME B16.11/EN12760 (SW);
ASME B16.25 / EN 12627 (BW).

Chevron ring on stem.

On request:

- with o'ring on stem (patent n°00219688).
- fire-safe execution according to ISO 10497 API 607
- fire-safe execution according to BS6755 API 607/6FA (patent n° 00219617).
- according to PED 14/68/UE directive
- according to TPED 2010/35/UE directive
- according to ATEX 14/34/UE directive
- degrease according to ISO 23208 for oxygen service
- **certified** in safety in safety system S.I.L. 3.
- **certified** for fugitive emission in class "A" ISO 15848.

3 Way ball valve



3 WAY BALL VALVE FU4

Three way 120° ball valve “wafer type”, full bore, manufactured from round bar or casted according to EN 12516.2; ASME B16.34, ISO 14313.

Patented n° 00219616.

Available size from DN 15 to DN 200 in carbon steel, stainless steel and special steel

Rating PN 10÷40 / ANSI 150 (On request available ANSI 300/600).

Chevron ring on stem.

On request:

- with o’ring on stem (patent n°00219688).
- fire-safe execution according to ISO 10497 API 607
- according to PED 14/68/UE directive
- according to TPED 2010/35/UE directive
- according to ATEX 14/34/UE directive
- degreased according to ISO 23208 for oxygen service
- **certified** in safety system S.I.L. 3.
- **certified** for fugitive emission in class “A” ISO 15848.



3 WAY BALL VALVE FT6

Three way 90° ball valve “wafer type”, full bore, manufactured from round bar, according to ASME B16.34; ISO 14313; DIN 3230 M3, ISO 14313.

Available size from DN ¼” to 2” in carbon steel, in stainless steel and special steel

Rating PN 25÷63.

Thread available ISO 7RP (GAS); ASME B1.20.1 (NPT)

With “T” bore or “L” bore type ball

Chevron ring on stem.

On request:

- with o’ring on stem (patent n°00219688).
- fire-safe execution according to ISO 10497 API 607
- fire-safe execution according to BS6755 API 607/6FA (patent n° 00219617).
- according to PED 14/68/UE directive
- according to TPED 2010/35/UE directive
- according to ATEX 14/34/UE directive
- degreased according to ISO 23208 for oxygen service
- **certified** in safety system S.I.L. 3.
- **certified** for fugitive emission in class “A” ISO 15848. Available with o’ring on stem (patent n°00219688).

3 Way ball valve



FT6

Three way 90° ball valve, full bore, manufactured from round bar

DN 1/4" ÷ DN 2"

PN 25 ÷ 64



FT4

Three way 90° ball valve, full bore, manufactured from round bar

DN 15 ÷ DN 150

PN 10 ÷ 40 / ANSI 150



FU4

Three way 120° ball valve, full bore, manufactured from round bar or casting

DN 15 ÷ DN 200

PN 10 ÷ 40 / ANSI 150



FV4

Three way 90° ball valve, full bore, manufactured from round bar or casting

DN 40 ÷ DN 200

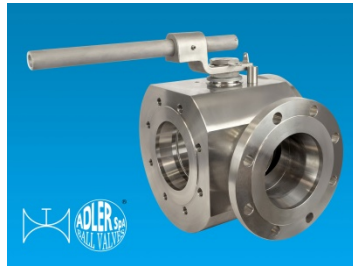
PN10 ÷ 40 / ANSI 150

3 Way ball valve



FZ4

Three way 90° ball valve, full bore, manufactured from round bar
DN 15 ÷ DN 150
PN 10 ÷ 40 / ANSI 150



FA4

Three way 90° ball valve, full bore, made from round bar
DN 15 ÷ DN 150
PN 10 ÷ 40 / ANSI 150



FZ6

Three way 90° ball valve, full bore, manufactured from round bar
DN 1/4" ÷ DN 2"
PN 25 ÷ 64

4 Way ball valve

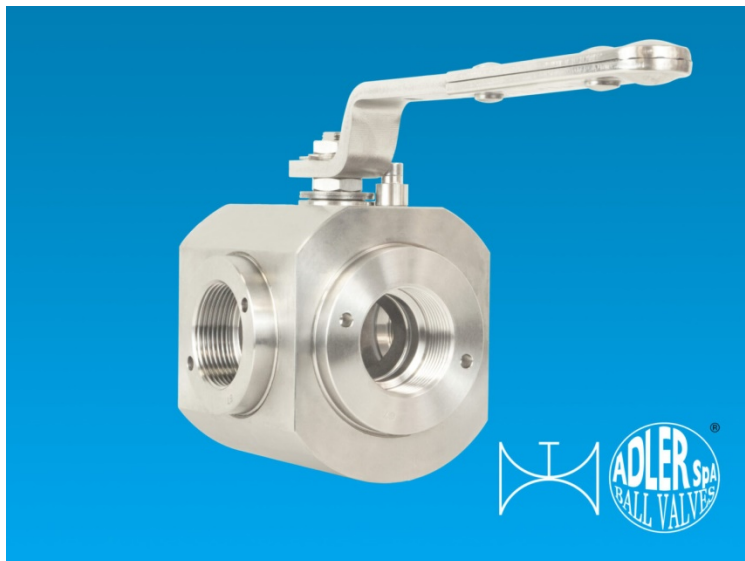


VT5

Four way 90° ball valve, reduced bore,
manufactured from round bar

DN 15 ÷ DN 150

PN 10 ÷ 40



RT7

Four way 90° ball valve, reduced
bore, manufactured from round
bar

DN 1/4" ÷ DN 2"

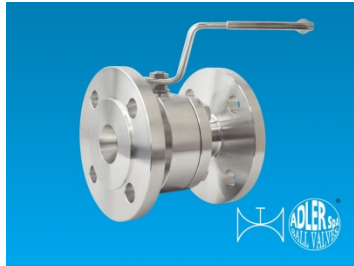
PN 25 ÷ 63

Venturi port ball valves



VM2

Ball valve 2 piece “split body” Venturi port, manufactured from round bar or casting
DN 40 ÷ DN 250
PN 10 ÷ 40



VE2

Ball valve 2 piece “split body” Venturi port, manufactured from round bar or casting
DN 40 ÷ DN 300
ANSI 150



VG2

Ball valve 2 piece “split body” Venturi port, manufactured from round bar or casting
DN 40 ÷ DN 250
ANSI 300



VN2

Ball valve 2 piece “split body” Venturi port, manufactured from round bar or casting
DN 40 ÷ DN 250
PN 10 ÷ 40



FA8

Ball valve “wafer type” end tank execution, full bore, oversize flange for connections tank, manufactured from round bar

TILTED 15° STEM

DN 50 ÷ DN 100

PN 10 – 16



FB8

Ball valve “wafer type” end tank execution, full bore, oversize flange for connections tank, manufactured from round bar or casted

DN 40 ÷ DN 200

PN 10 – 16

Ball valve with heating jacket



FX1

Ball valve with heating jacket made in carbon steel or stainless steel
Flanged, threaded or welding ends
DN 15 ÷ DN 50
PN 6 – PN 10 ÷ 40 / ANSI 150 ÷ 300



FX2

Ball valve with heating jacket made in carbon steel or stainless steel
Flanged, threaded or welding ends
DN 15 ÷ DN 250
PN 6 – PN 10 ÷ 40 / ANSI 150 ÷ 300



FY2

Ball valve with heating jacket made in carbon steel or stainless steel
Flanged, threaded or welding ends
DN 150 ÷ DN 200
PN 10 ÷ 40 / ANSI 150



FY1

Ball valve with heating jacket made in carbon steel or stainless steel
Flanged, threaded or welding ends
DN 65 ÷ DN 125
PN 10 ÷ 40 / ANSI 150



FJ2

Ball valve with heating jacket made in carbon steel or stainless steel
Flanged, threaded or welding ends
DN 15 ÷ DN 300
PN 10 ÷ 40



FK2

Ball valve with heating jacket made in carbon steel or stainless steel
Flanged, threaded or welding ends
DN 15 ÷ DN 200
ANSI 150



FT4

Ball valve three way with heating jacket made in carbon steel or stainless steel
Flanged, threaded or welding ends
DN 15 ÷ DN 150
PN 10 ÷ 40 / ANSI 150



FZ4

Ball valve three way with heating jacket made in carbon steel or stainless steel
Flanged, threaded or welding ends
DN 15 ÷ DN 150
PN 10 ÷ 40 / ANSI 150

Ball valve with nipples

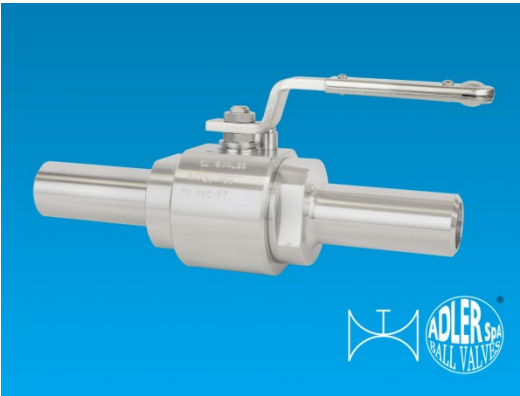


FR3

Three pieces ball valves, full bore, manufacturing from round steel bar or casting

DN 1/4 ÷ DN 4"

PN 20 ÷ 100



FR2

Threaded ball valve 2 piece full bore, manufactured from round steel bar

DN 1/4" ÷ DN 3"

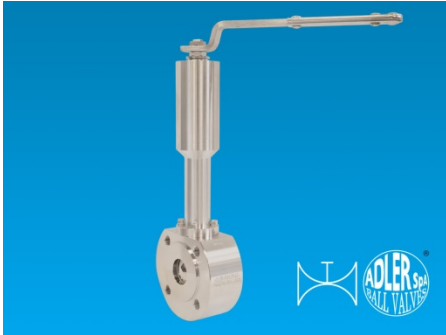
PN 40 ÷ 210 / Classe 800 ÷ 3000

Split Body Ball Valve



BALL VALVES FOR CRYOGENIC SERVICE 100MM

Ball valves for service in cryogenic temperature up to -80°C



BALL VALVES FOR CRYOGENIC SERVICE 250MM

Ball valves for service in cryogenic temperature up to -196°C